



## PeopleLink DSP CM



Experience high-quality audio communication with PeopleLink's voice collaboration DSP, converting your classrooms, training rooms, and boardrooms with the ease of technology for conferencing.

DSP-CM is integrated with a high signal-to-noise ratio, adaptive echo cancellation, adaptive noise suppression, and intelligent sound mixing function. Ceiling microphones are designed to cover meeting spaces, such as training rooms, classrooms, and demo rooms, with discreet and easy ceiling mounting.

## Key Features

- HD voice pickup range mic
- The 3rd Generation of Auctopus Audio Processing Algorithm
- Efficient Layout
- Compatible with common audio and



Recommended for PeopleLink powered Video Collaboration Solutions

# General Specifications

## Component :

Digital audio processor  
 DSP processing bus structure  
 B-type USB connection  
 2 road 3.81mm phoenix interface  
 Input and output single adjustment knob  
 Suspended spherical microphone

## Interface :

**USB :** USB Type-B  
**Power :** DC 12V  
**Phoenix interface :** 2 road 3.81mm

## Power Supply :

**Power Supply :** Power Adapter  
**Input :** 100-240v, 0.5A, 50/60Hz.  
**Output:** DC 12V,2A

## Audio Processor :

**Frequency response :** (20hz-20khz @+4dBu)  
**Microphone channel:** +0/ -2dB  
**line input channel:** +0/-0.5dB.  
**Light :** Work normal , red, green alternatively lighting on certification

## Audio Features :

**Adaptive echo cancellation :** Yes  
**Adaptive noise suppression :** Yes  
**Intelligent remix :** Yes

## OS Support :

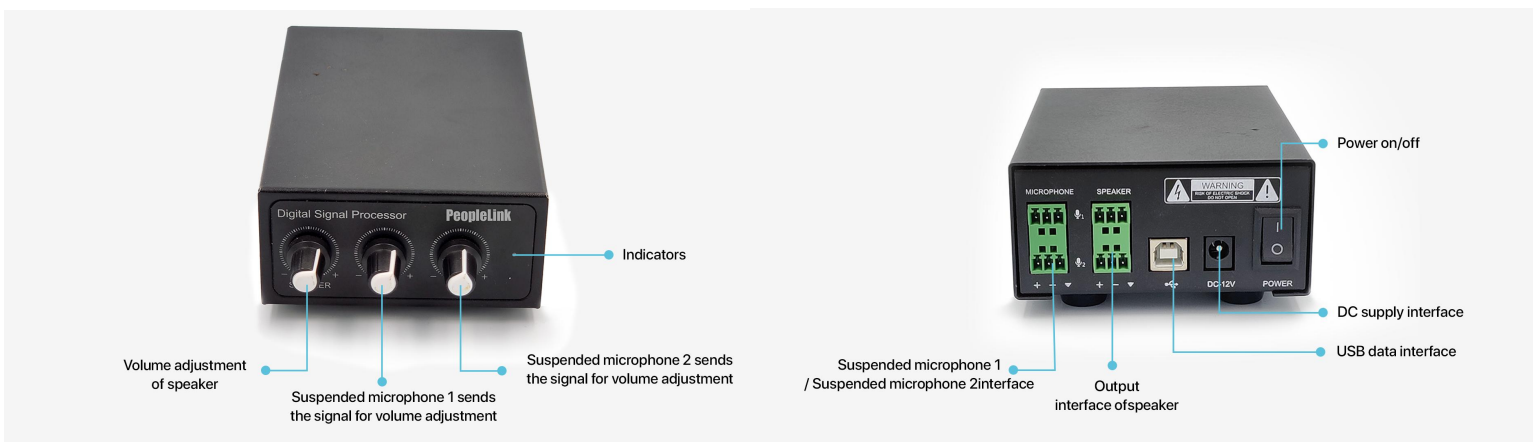
Windows 7 / Windows 10 /Windows XP, Mac OS

## Temperature :

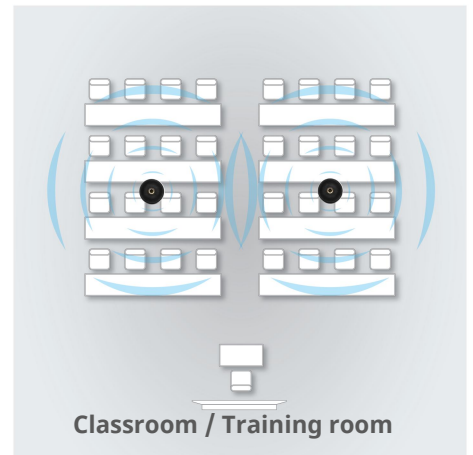
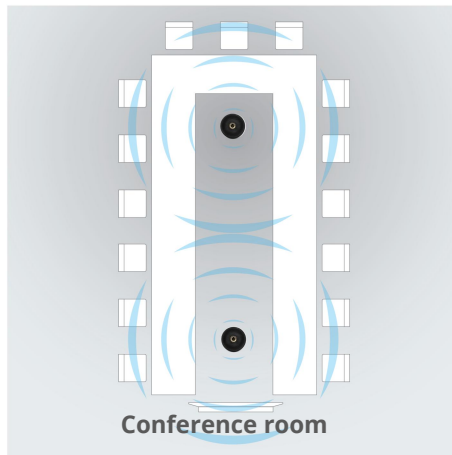
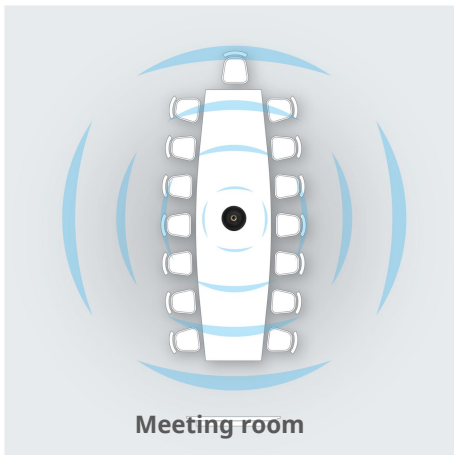
**Temperature :** 20°~70°  
**Humidity :** 20~90% condensation free  
**Noise level :** <48dB  
**Storage temperature :** 20°~70

## Microphone :

**Pick up radius :** 10m Max  
**Frequency response :** 50hz-20khz  
**Sensitivity :** -47 plus or minus 3dB.  
**SNR:** 75dB

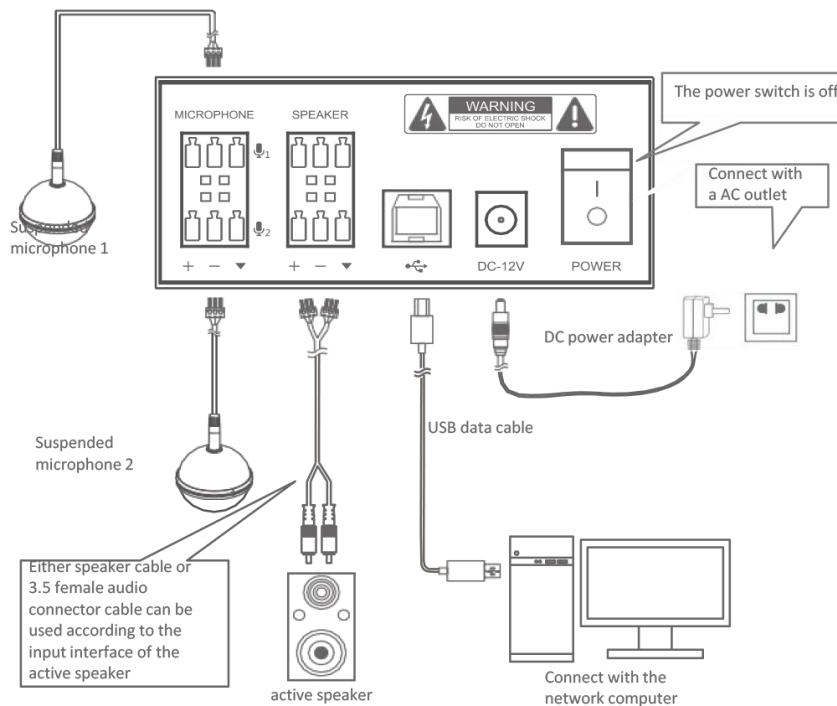


## Application Scenarios



**Disclaimer:-** Room setup diagrams provided for reference only. Actual room setup and size may vary as per requirements.

## Connectivity



## Ordering Information

**PeopleLink DSP CM**

**: PCU-DSP-CM**

**LEARN MORE**

For more information on DSP CM [Click Here](#)

## SALES AND INQUIRIES

### Global Headquarters

Q3-A3, 10th Floor Cyber Towers,  
HITEC City, Hyderabad,  
Telangana 500081, **India**  
Phone: **+91 9100123013**  
Email: **vc@peoplelinkvc.com**

### International Contact Numbers

**USA:** +1 669-696-8383  
**Australia:** +61 370 037070  
**France:** +33 6 80 75 26 42  
**Middle East:** +966 5300 19292  
**UK:** +44 20 4571 5454

### Tech Support

**Toll Free:** 1800 208 3399  
customersupport@peoplelinkvc.com