



ANC BLUETOOTH HEADPHONE

ANC

Active
Noise cancelling



Manual

Please read all instructions carefully
and retain for future use

SONIC OE10W

Usage Instruction

- Don't attempt to disassemble the unit and change any part, except there is operation method mentioned in the manual.
- Don't expose the unit to liquid, moisture or humidity, since it is not a waterproof product.
- Disconnect the unit with your BT device and move it to the safe area if the liquid get inside the unit.
- Don't assemble or disassemble the unit to avoid electric shock, if there is water on your hands.
- Don't expose the unit to extremely high temperature or dispose of the unit in fire as it will result in an explosion.
- Don't place the unit in an electromagnetic interference environment to avoid malfunction.

Packing list

Headphones	X 1
User manual X 1	X 1
3.5mm AUX line	X 1
Charging cable	X 1

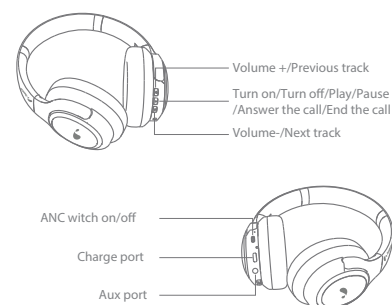


Product specification

- BT version : V5.0
- Battery capacity : 400 mAh
- Charging time : About 2.5 hours
- Transmission distance : ≥ 10 meters
- Horn impedance : $32 \Omega \pm 15\%$
- Frequency range : 20 Hz-20KHz
- Speaker size : 40 mm
- Playing time : About 15 hours
- Rated input : 5V ≈ 350 mA
- Audio interface : AUX
- SNR : 115dB ± 3 dB
- Microphone sensitivity : -38dB ± 3 dB
- ANC depth : -25dB ± 3 dB

(All technical information is subject to actual performance)

Product schematic description



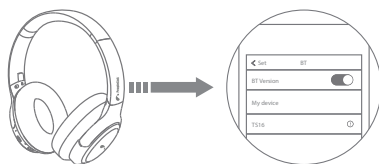
Operating instruction

1. Turn on/Turn off

- When the earphones is in turn off states, long press the button for 3 seconds to start the earphone.
- When the earphones is in turn on states, long press the button for 3 seconds to power off the earphone.

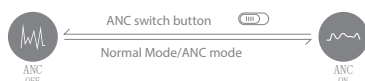
2. BT pairing

- Step 1: When the earphones is in turn off states, long press the button for 3 seconds to start the earphone.
- Step 2: Open the smart device BT list, search and find "SONIC OE10W", click it to connect.



3. Switch on/off ANC mode

- When the earphones is in non ANC mode, put the switch button up to open the ANC mode.
- When the earphones is in ANC mode, put the switch button down to off the ANC mode.



Reminder: After using the headset, please turn off the headphone, meanwhile switch the ANC noise reduction button to the "ANC off" side to avoid running out of power

4. During the music playing

- Single Click: Volume up
- Long press 2 seconds: Previous track
- Single click: Volume down
- Long press 2 seconds: Next track
- Single click: Play/Pause

5. Phone hands-free

- Single click: Answer the call/End the call
- Click twice: Rewind the phone
- Long press 2 seconds: Reject the call

LED light introduction

Turn on	Red and blue LED light flash alternately
Turn off	Red and blue LED light die out
ANC mode	Green LED light normally on
ANC shut off	Green LED light die out
Reconnect	Red and blue LED light flash alternately
Bluetooth connected	Red and blue LED light die out
Search the Bluetooth device	Red and blue LED light flash alternately
Bluetooth disconnect	Red and blue LED light flash alternately
Earphones charging	Red LED light normally on
Earphones fully charged	Red LED light die out
Battery low prompt	Red LED light flash 1 time every 10 seconds.